



# orchid-gami

NATIVE TO THE U.S. AND CANADA

## *Calopogon barbatus* Bearded Grass Pink

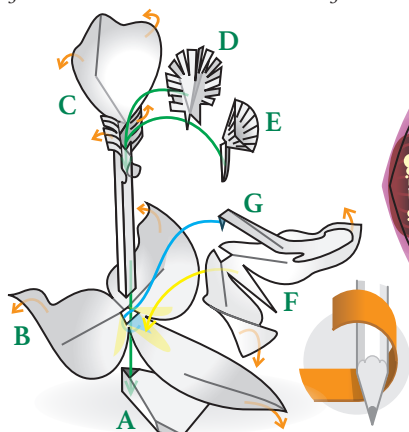


The Bearded Grass Pink grows throughout the pine savannas along the Southeast coastal plain from North Carolina to Florida and west to

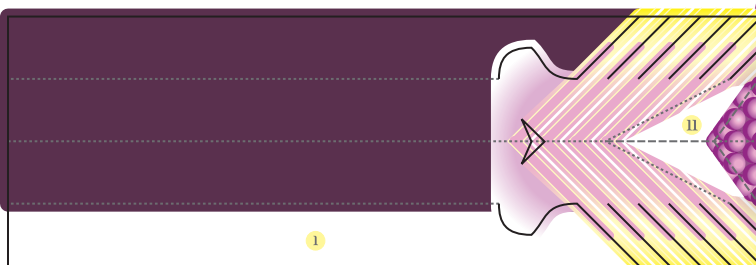
Louisiana. Across its range, this orchid faces a variety of threats from loss of habitat by development and agriculture, to wild hogs that destroy entire populations as they root out the tasty corms.

The flowers of Grass Pinks differ from most orchids in that the lip is at the top of the flower, not at the bottom. This hinged lip has a crest of yellow bristles which attract bees. The weight of a bee that lands on the bristles bends the lip forward, pushing the bee onto the stigma. Any pollen the bee is carrying on its back is left behind to pollinate the flower. The bee struggles to escape and new pollen is transferred to the bee to be carried off to the next flower it visits.

To learn more about the Bearded Grass Pink, scan the QR code with your phone or visit the species page on *Go Orchids* at [goorchids.northamericanorchidcenter.org](http://goorchids.northamericanorchidcenter.org)

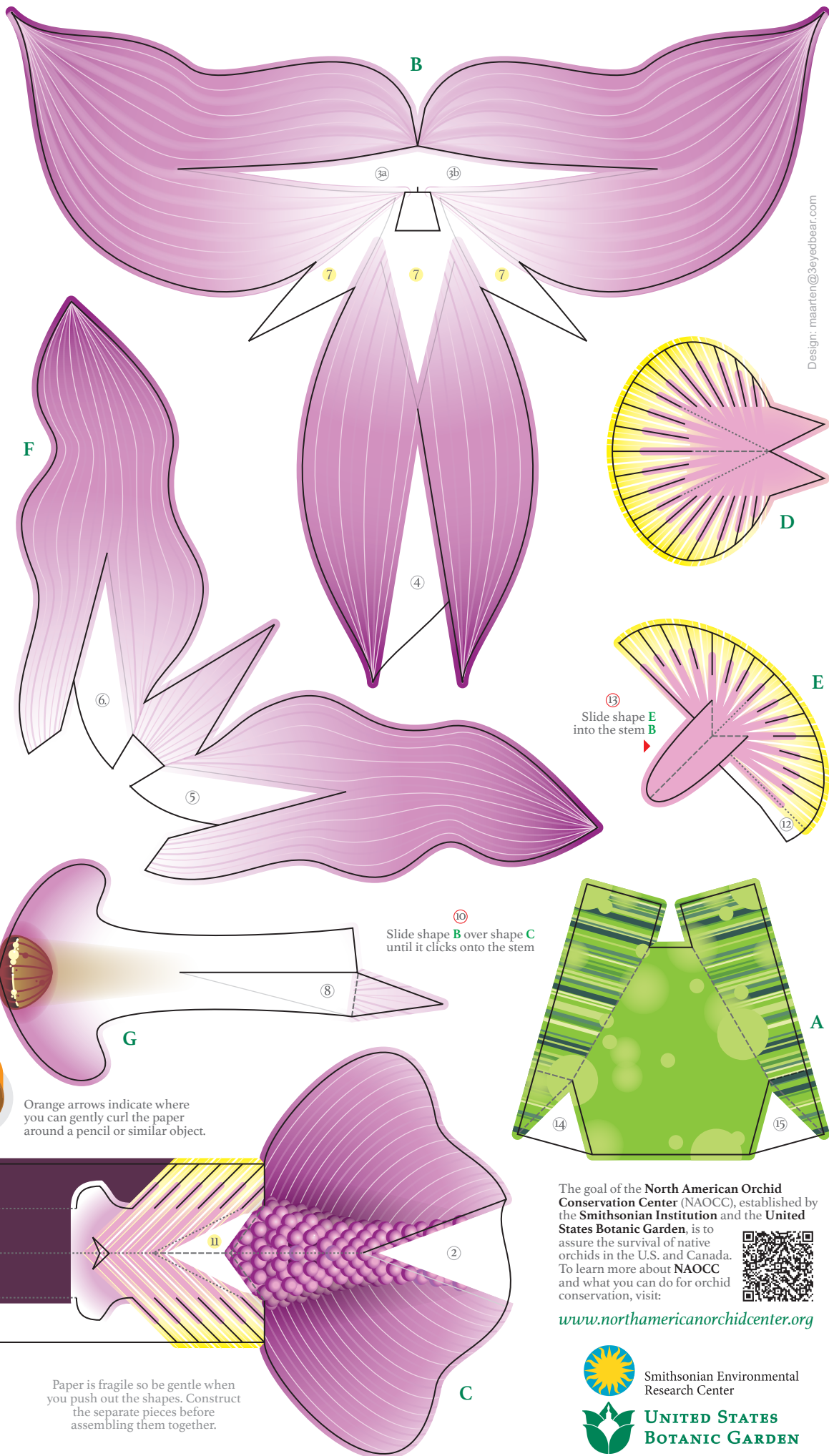


Orange arrows indicate where you can gently curl the paper around a pencil or similar object.



★★★★☆ Model Difficulty  
 - - - - - Hill-fold  
 ..... Valley-fold  
 \_\_\_\_\_ Glue Guidance  
 ① ② ③ ④ ⑤ ⑥ ⑦ ⑧ ... Glue Order

Paper is fragile so be gentle when you push out the shapes. Construct the separate pieces before assembling them together.



The goal of the **North American Orchid Conservation Center** (NAOCC), established by the **Smithsonian Institution** and the **United States Botanic Garden**, is to assure the survival of native orchids in the U.S. and Canada. To learn more about NAOCC and what you can do for orchid conservation, visit:

[www.northamericanorchidcenter.org](http://www.northamericanorchidcenter.org)



Smithsonian Environmental Research Center



UNITED STATES BOTANIC GARDEN

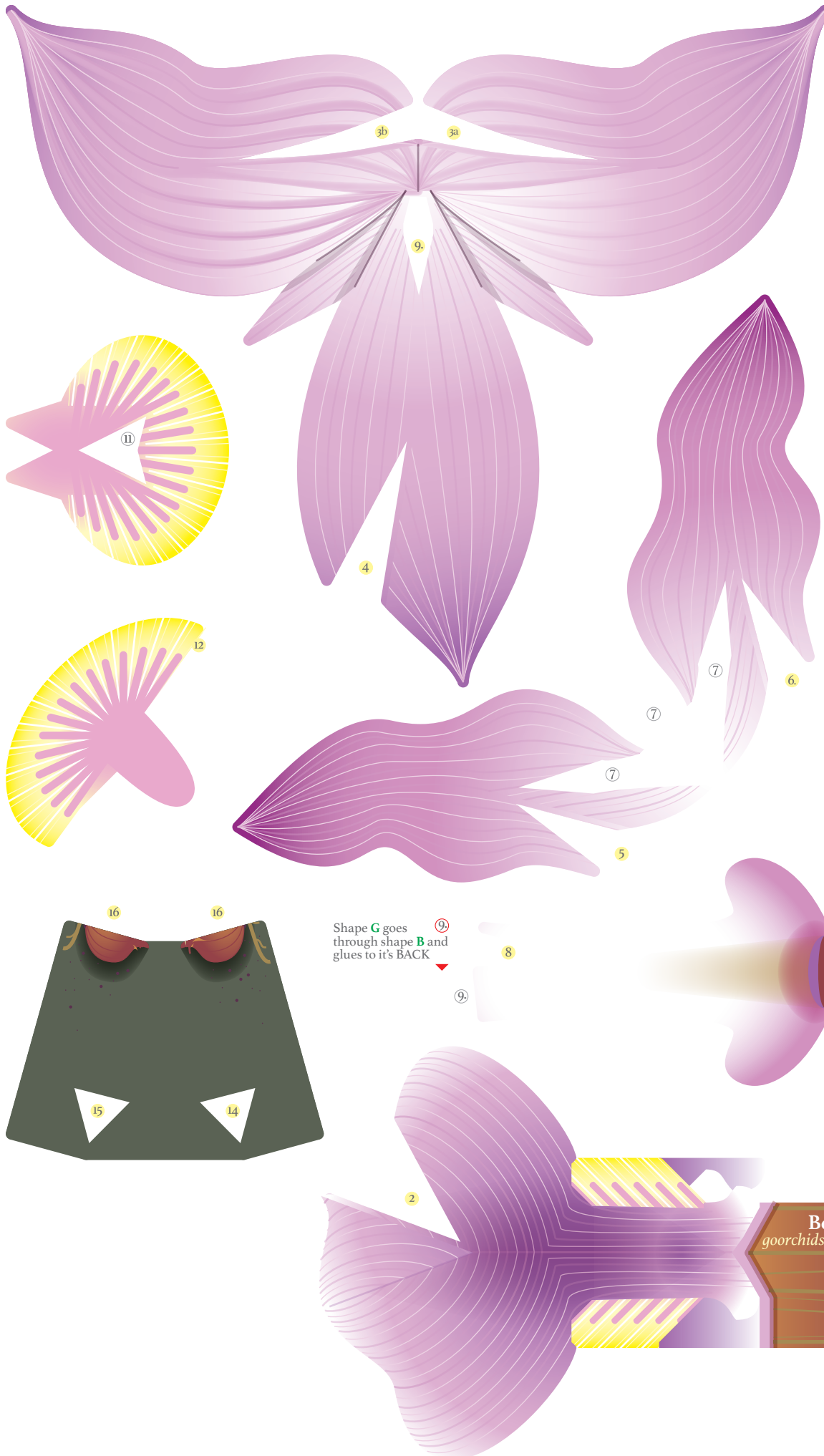
Design: maarten@3eyedbear.com

# orchid-gami

NATIVE TO THE U.S. AND CANADA



This is what the paper Bearded Grass Pink will look like when built.



Shape **G** goes through shape **B** and glues to it's BACK

**Bearded Grass Pink**  
[goorchids.northamericanorchidcenter.org](http://goorchids.northamericanorchidcenter.org)

16

16