



# orchid-gami

NATIVE TO THE U.S. AND CANADA

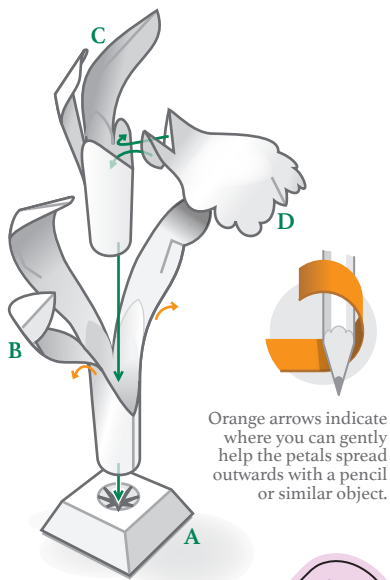
## *Arethusa bulbosa* Dragon's Mouth



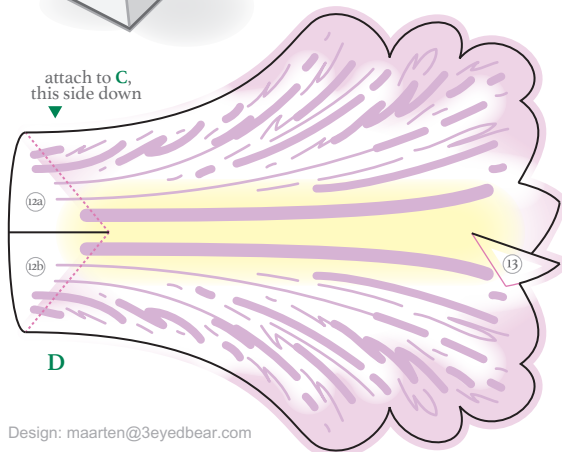
This fearsome orchid favors a bed of sphagnum moss and makes its home in the cool bogs of eastern North America.

The single bright pink flower has a striking lip marked with magenta spots and a crest of yellow bristles. Those yellow bristles shine brightly in UV light - the wavelength of light bees see best - and trick a bumblebee into landing, expecting a free meal. But there's nothing there! Disappointed, the bee soon flies off, unaware the pollen attached to its back will be delivered to the next flower it visits.

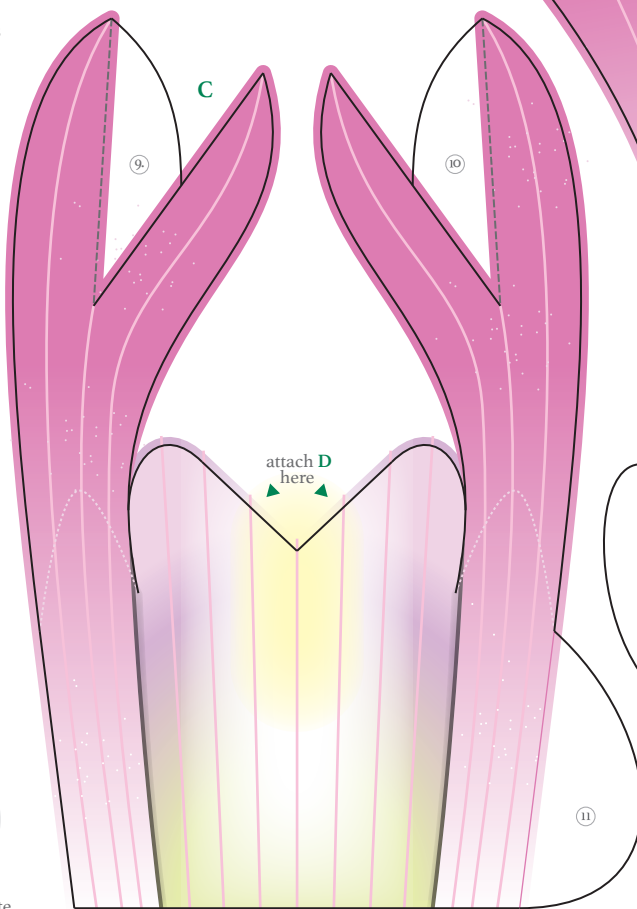
To learn more about the Dragon's Mouth, scan the QR code with your phone or visit the species page on *Go Orchids* at <http://goorchids.northamericanorchidcenter.org>



Orange arrows indicate where you can gently help the petals spread outwards with a pencil or similar object.



14 slide C into B  
15 slide B/C into stand A



attach D here



Paper is fragile so be gentle when you push out the shapes. Glue the separate pieces before assembling them together.



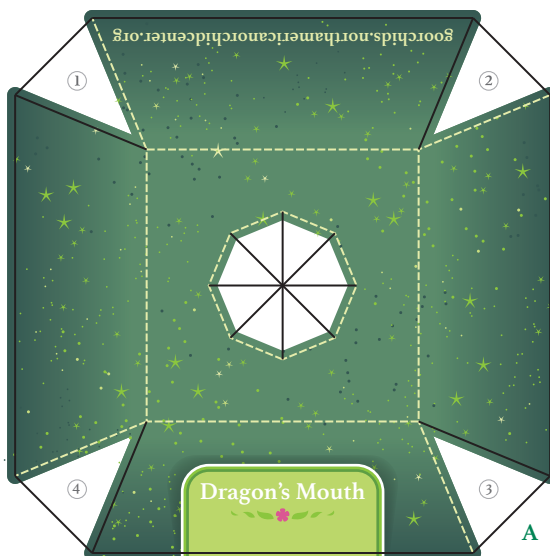
Model Difficulty

----- Hill-fold

----- Valley-fold

----- Glue Guidance

1 2 3 4 5 6 7 8 ... Glue Order



The goal of the **North American Orchid Conservation Center (NAOCC)**, established by the **Smithsonian Institution** and the **United States Botanic Garden**, is to assure the survival of native orchids in the U.S. and Canada. To learn more about NAOCC and what you can do for orchid conservation, visit:



[www.northamericanorchidcenter.org](http://www.northamericanorchidcenter.org)



Smithsonian Environmental Research Center



UNITED STATES BOTANIC GARDEN

# orchid-gami

NATIVE TO THE US AND CANADA

This is what the paper Dragon's Mouth Orchid will look like when built:

