



orchid-gami

NATIVE TO THE U.S. AND CANADA

Cleistesipsis bifaria
Small Spreading Pogonia



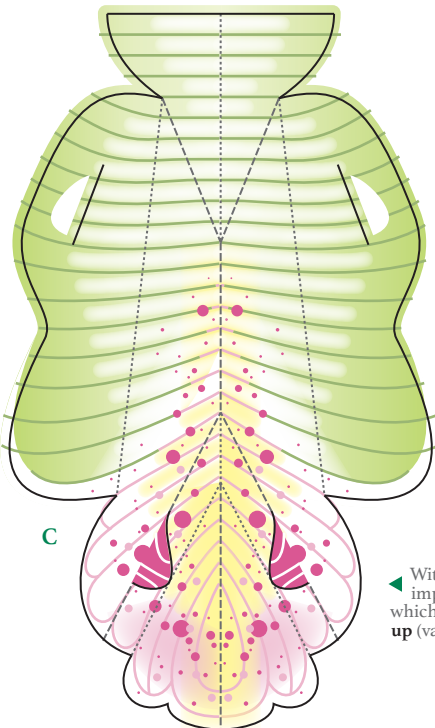
The Small Spreading Pogonia is found in colonies throughout the mountains of south-eastern United States and depends on an occasional fire to keep its habitat open. A single leaf grows halfway up each stem and what looks like a second smaller leaf is actually a bract attached to the base of the flower. Two upper petals, each with a slight curl at the tip, and a red-veined lip form the distinctive flower tube. A bright yellow crest on the lip resembles pollen and may fool hungry bees looking for a free meal. The variety of flower color and contrasting patterns on the lip may prevent bees from learning to avoid these flowers which deceive but offer no reward. To learn more about the Small Spreading Pogonia, scan the QR code with your phone or visit the species page on Go Orchids at <http://goorchids.northamericanorchidcenter.org>

Paper is fragile so be gentle when you push out the shapes. Construct the separate pieces before assembling them together.

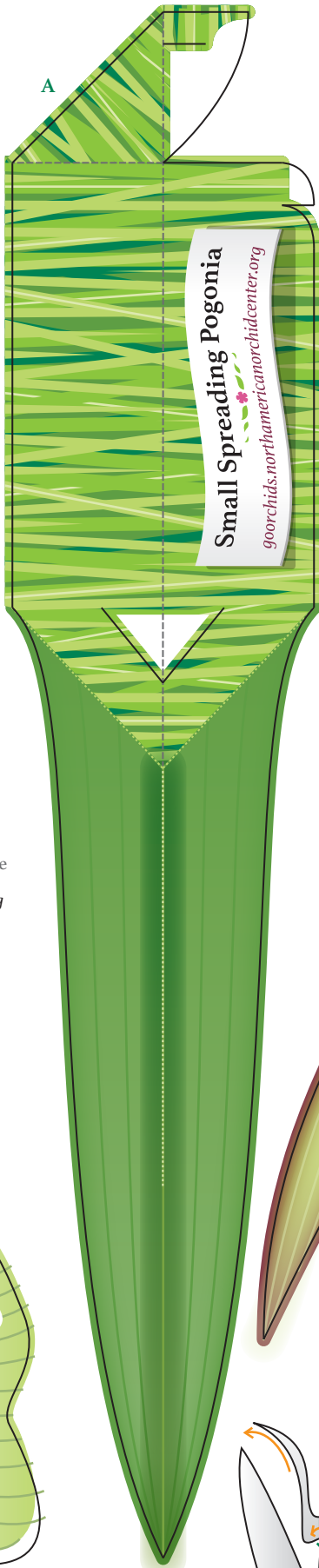


Model Difficulty
----- Hill-fold
----- Valley-fold

GLUELESS MODEL!

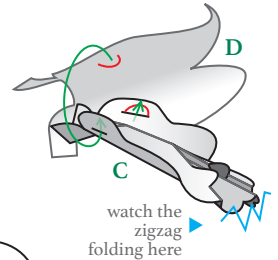
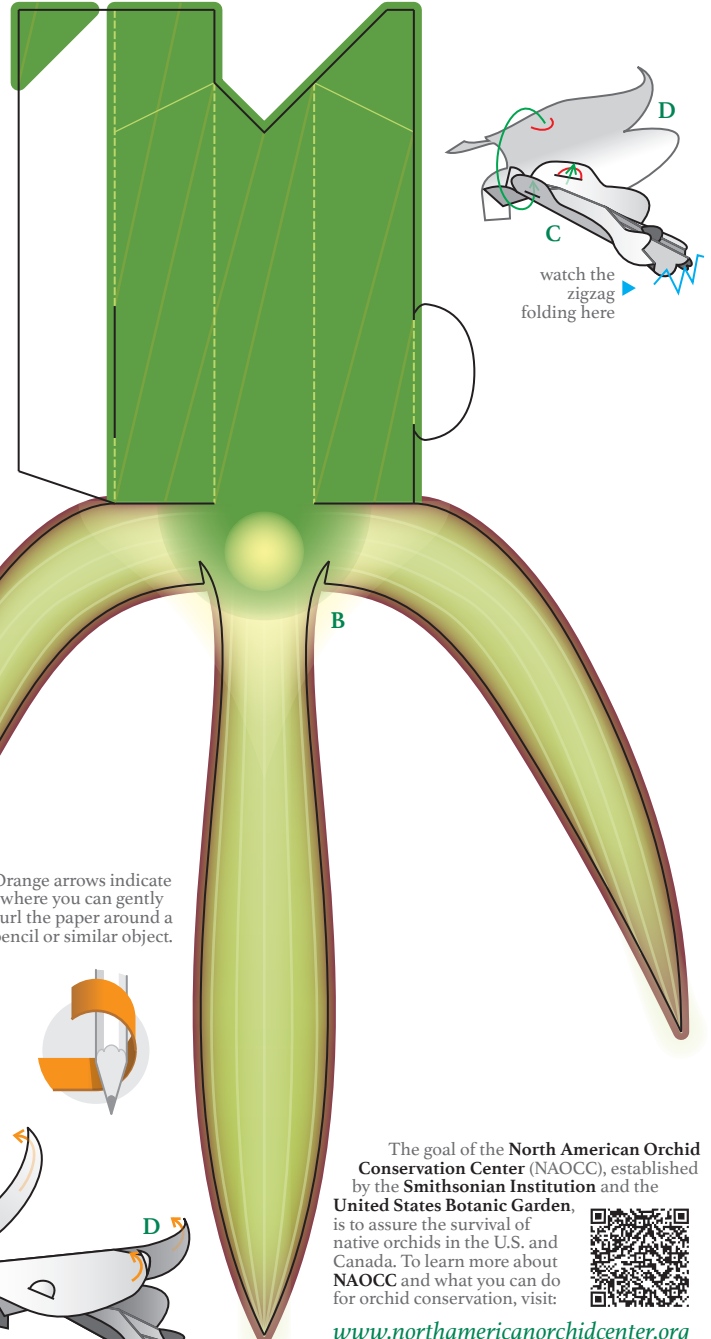
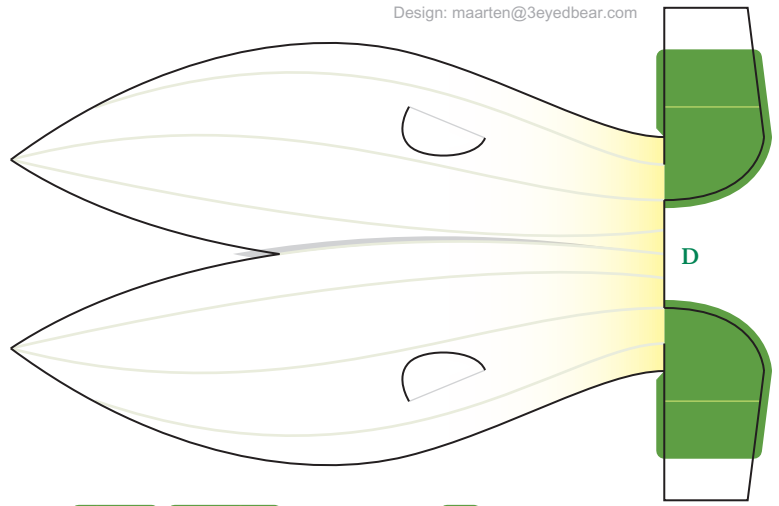


With this model it's important to check which way the fold goes: **up** (valley-fold) or **down** (hill-fold).



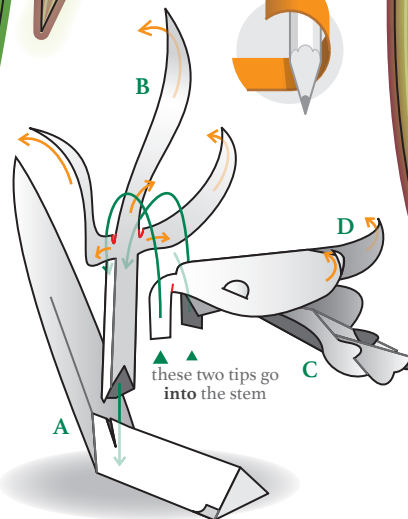
Small Spreading Pogonia
goorchids.northamericanorchidcenter.org

Design: maarten@3eyedbear.com



watch the zigzag folding here

Orange arrows indicate where you can gently curl the paper around a pencil or similar object.



The goal of the North American Orchid Conservation Center (NAOCC), established by the Smithsonian Institution and the United States Botanic Garden, is to assure the survival of native orchids in the U.S. and Canada. To learn more about NAOCC and what you can do for orchid conservation, visit:

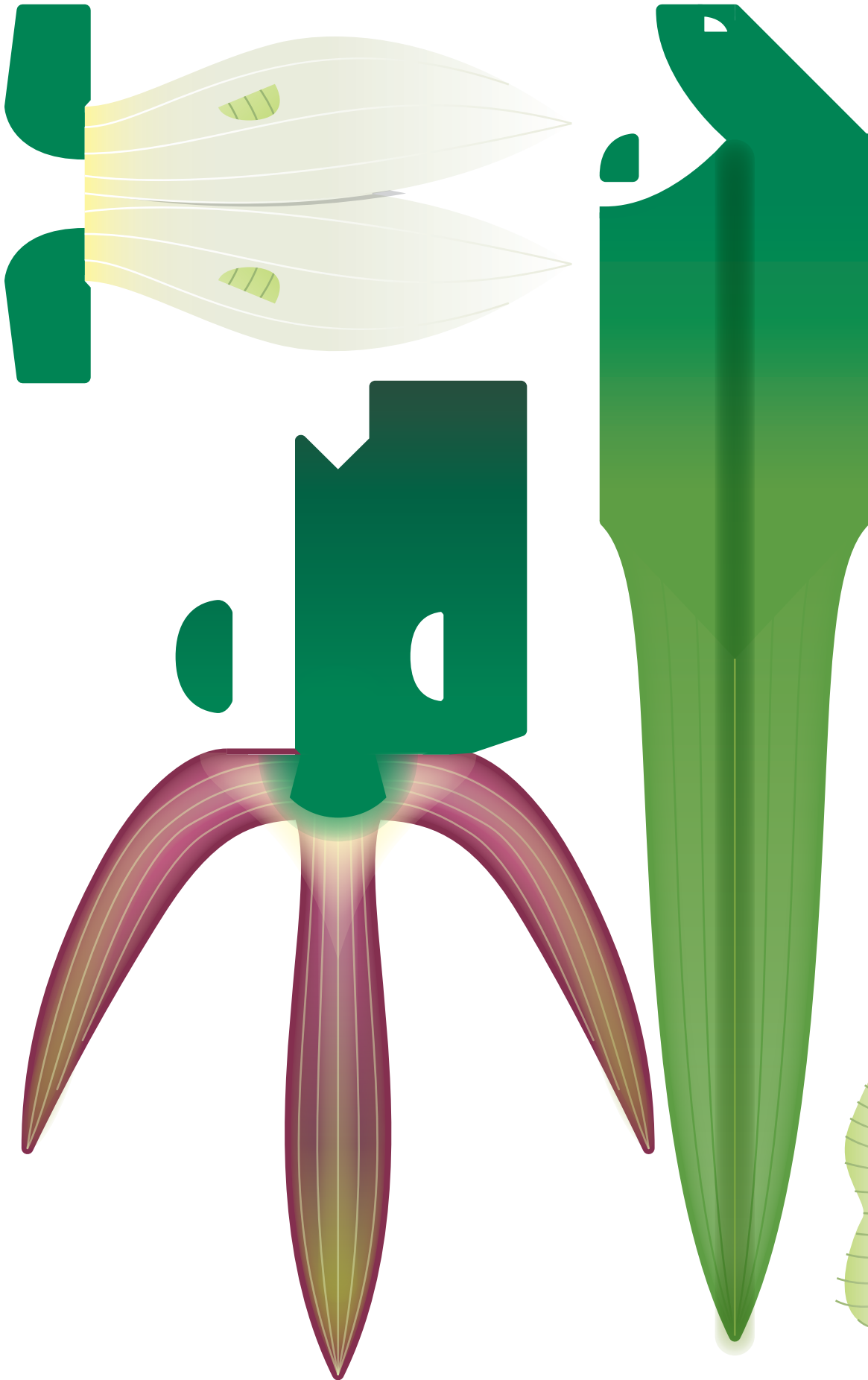


www.northamericanorchidcenter.org



Smithsonian Environmental Research Center

UNITED STATES BOTANIC GARDEN



This is what the paper Small Spreading Pogonia will look like when built:

