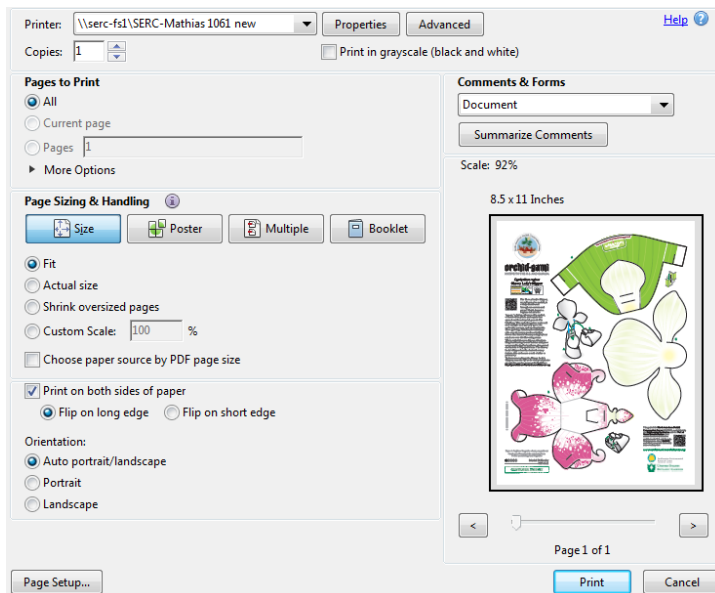


Instructions

-Before you start, read each individual orchid page! This will help you understand the structure of the orchid and how to put it together. Print 2 copies so you can refer to the instructions as you cut out the pieces.

- There is a star rating for level of difficulty (1 is easy, 5 is a challenge).
- Start with an easy one and work your way up.
- Cut on all solid lines, even if they are in the middle of a flower.
- The letters correspond to the order in which to assemble the pieces. The numbers correspond to the order in which the pieces need to be glued.
- Work in alphabetical order first, then numeric.

Printing



Click the printer icon or select “Print” from the “File” menu

1. Under the “Page Sizing and Handling” choose:

“Fit”

“Print on both sides of paper”

“Flip on long edge”

2. Click “Print”

Paper Quality- regular printer paper is usually rated 20 lb, a little thin for the models. We prefer at least 32 lb (120 g/m) glossy paper that is coated on both sides. Card stock at 80 lb or more, is too stiff for small folds.

Folding, Gluing, and Tweezing

- There are 2 different kinds of folds you should know.
- A **hill fold** has the crease at the top, and the sides sloping downwards —like a hill
- A **valley fold** has the crease at the bottom, and the sides sloping upwards—like a valley
- Liquid glue is fine, but glue sticks are quicker to dry with less mess!



- We suggest that you use tweezers to hold and bend the smaller pieces together until they are in place and the glue dries.